



DATA MAT

Intelligent Flooring

By Class A Matting

Powered by



IData 340 Mat with **Sencorable Technology** will detect the presence, movement, and direction of people in real time. Our process preserves customer anonymity and costs a fraction of previous methods. Our accuracy is unmatched. The sensors can determine not only that someone is in the room, but whether they are sitting, standing, or lying down.

They can track your movements because footprints are as unique as fingerprints. The technology is fully integratable to many data systems. We can provide an API (Application Program Interface) for those that wish to integrate this technology into their existing BMS (Building Management System) or HVAC automation programs.

At their simplest, the mats can be utilized for on/off switch activation. Sensitivity can be programmed to varied levels.

Currently, all mats require 110 power for a 5 watt power cord. Rechargeable battery models are expected to be available late 2017.

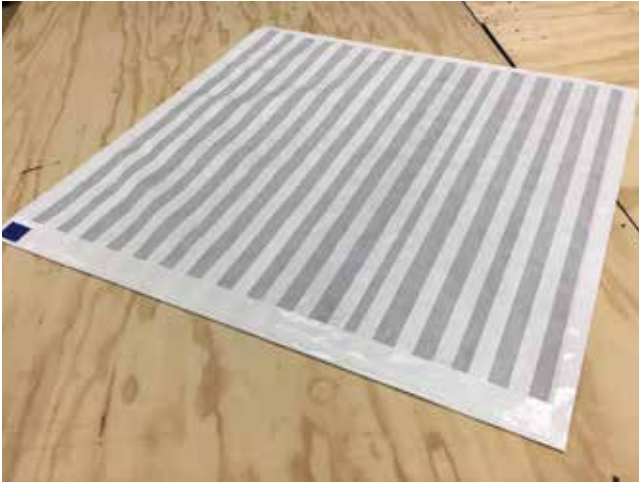
Daily Analysis

288	People per day
24	People per hour
1:48 m	Min Avg dwell
28 s	Shortest dwell
5:32 m	Longest dwell



Mat Types

Basic Underlay iData Mat



Our sensor underlayment can be fully integrated into a wide range of commercial substrates and industrial matting. This material can be installed directly under flooring including, but not limited to, carpet, wood, artificial turf, as well as granulated rubber flooring. The exception would be large marble or granite slab tile. See specifications for material thickness. There are no size limitations and sensors can be connected (hard wired) throughout a facility or combined via software.

Industrial iData Mat



We can incorporate the Sensors material into commercial matting with or without logos. These mats are built for indoor or outdoor use and last longer than any matting on the market today. Data is sent wirelessly to the cloud where you have 24/7 access. Fully functional with ADA compliant edging and non-skid backing these mats are built for performance. Mats can be built to any size, shape and specified thickness.

Retrofit On/Off Mat



At its basic level these mats can be placed under existing matting or flooring that offer on/off integration into industrial applications. These mats have been tested for many years and approved for wet, dry, oily, hot or cold environments. Requires 110 outlet to power a 5 watt charger.

Industrial On/Off Mat



If you need on/off integration and don't have a substrate to place it under we offer a simple free standing switch mat with a combined safety surface. This mat can activate lights, sensors, POP displays, or be integrated into your existing heat/air or security system.

Software Portal and API Interface

Each iData mat or sensor mat can be viewed via an Online Portal. This portal provides a live view and allows for continued updates of the data you require. By collecting, storing and analyzing data the iData mats generate, we can provide end users with real time and historic feedback of how floor space is utilized.

The portal has been designed so it can monitor multiple mats for a single client in multiple locations.

Its ability to interface with third party software, i.e. building, retail or security management systems, allows the data generated to be integrated in or compared with other data sources thus maximizing efficiency in all IoT systems.

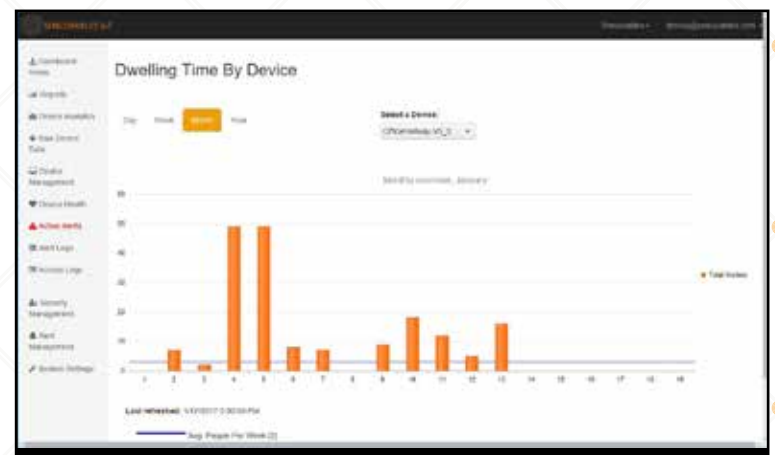
Current Capabilities

- Pressure map often referred to as Heat-map (Live view of any movement on the mat)
- Presence detection with alerts
- Traffic count at entrances or exits
- Work station monitoring
- Dwell time
- Daily, weekly, monthly reports by location
- Online Dashboard (portal)
- Third party interface (API)

Pressure sensor map (live view)



Device Analytics by Date



Activity Alerts by Device



These are a few of the reports and data available Online. Custom reports are available.

Frequently asked questions:

What is the Maximum Dimension?

The largest standard size we produce is 10'8" (3.25 m) by 32' (9.75 m). Larger custom mats are available upon request.

What is Measured?

The data represents the weight on the mat at set intervals. The force readings given are relative to a "tare-value" that is determined at device startup and at other intervals controlled by software. This allows for non-moving objects to be zeroed out so their weights are not constantly being transmitted.

What is the Measurement Rate?

We scan the mats approximately 10 times per second.

What size mat do I need?

For the iData sensor mat a minimum of 6 walking feet is recommended. This ensures all traffic is captured by floor pressure and stride for analysis. Smaller areas of coverage are capable of monitoring dwell time and activity but may lose their ability to accurately count customers traffic in and of out of a facility due to lack of individual complete stride imprint.

How Often is Data Transmitted?

The data is posted every second if there is any data recorded. This is a cloud setting that can be changed for individual devices or multiple groupings of devices. If there are no readings above the force threshold (i.e. no activity on the mat or floor) no data is posted.

What is the Data Volume?

The data volume depends entirely on the amount of time the mat or floor is occupied and by how many occupants are activating the sensors.

Do the Mats Need to be Online Continually?

We do not currently cache data when off-line. However, we will soon be adding this capability via a wireless software update.

How is the Power Supplied to the Mats?

Power comes via 110 outlet utilizing a 5 watt Mini B style Phone charger (supplied). We will have stand alone battery capabilities expected late 2017 that will run the mat 6 months to 1 year depending on the amount of traffic and data usage.

Can my Mats be Moved to Different Locations?

Yes - mats can be moved to different locations. We will just need to know so we can update the Online Portal to match the new location. On/Off mats do not need to be updated online unless specific alerts and reports were created per individual mats.

Is there an API Interface? (Application Program Interface)

Yes - We can provide the details to your software engineers.

Applications

- Retail - Monitor traffic patterns, floor usage and display analytics.
- Commercial Buildings - Monitor traffic count or restricted access zones.
- Airports - Set up queuing lines and alarms for staffing analytics.
- Banks - Interface with current alarm systems and restricted areas.
- Health Care - Remotely monitor and increase response time for room activity. Receive alerts if patient falls/or gets out of bed. Verify staff positioning.
- Marinas - Add security for unauthorized access to private boats and docks.
- Cruise Ships - monitor unauthorized access to restricted areas. Maintain people count by level or quadrant.

How it Works

Sencorables developed a fundamentally different sensor technology that measures force and pressure distribution. Based on shoe width, length and pressure they create a “3D” or “Digital” footprint which allows us to detect presence, movement and direction of individual people in real-time.

The sensors are made of the most wear resistant engineered polymer available and are embedded in a spun bond non-woven material that passes the British Spill Test and Water Penetration by Impact Testing.



Technical Details

Specifications:

Graphic Method Mats	Inlaid and/or Laminated - multiple options
Manufacturing Process	Textile
Face Weight	Varies with Top Base Material
Face Fiber	Varies with Top Base Material
Weight per sq. ft.	Varies with Top Base Material
Water Permeability	No
Durability	Purposed Heavy Traffic
Backing	Optional - Application dependent
Edging	Optional
iData Raw Profile	1/32" or .08mm
API	Yes
Warranty	5 years Limited
Size	Unlimited Free lay – Mats can be Sequentially-linked
Data Plan	Monthly (No Contract) Cost varies with data usage and size of mat.
iData Reports	Online via IoT Portal
Data Collection	Wireless Cloud Base Real Time Microsoft Azure
Power	5 volt Mini B (110 outlet required)
Installation Method	Glue Down or Laminated Inside Matting



DATA MAT[®]

Intelligent Flooring

By Class A Matting

Powered by



iData Mat[®] is a Trademark of Class A Matting. Class A Matting is a subsidiary of ProFab Technologies, Inc., located in Dalton, GA. We manufacture and convert technologically advanced mats and flooring. Our industries include, but are not limited to, Class A High- rise Buildings, Airport and Municipalities, Exhibit and Event Venues, Retail Chains and Outlets, Advertising and Kiosk Manufacturers as well as the Marine Industry. Explore our capabilities at:

<http://www.Profabtec.com>
<http://www.classAmatting.com>

Class A Matting
Phone - 855.737.7320

543 Callahan Rd SE,
Fax - 706.529.6829

Dalton, Ga 30721
email - info@classAmatting.com